

# Weekly Metal Data

2nd Week of Oct ( 24-10-07 ~ 24-10-11 )

Consulting/ Dealing Room: (02) 3774-0311 ~ 0321 FAX: (02) 761-2264 / 2265

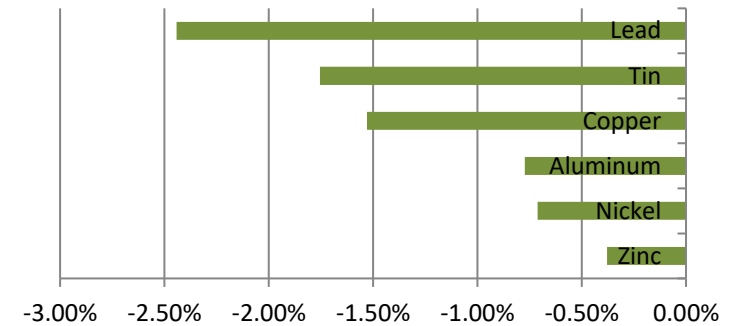
NH선물 글로벌상품영업팀

## BASE Metals

### Weekly Price Movement

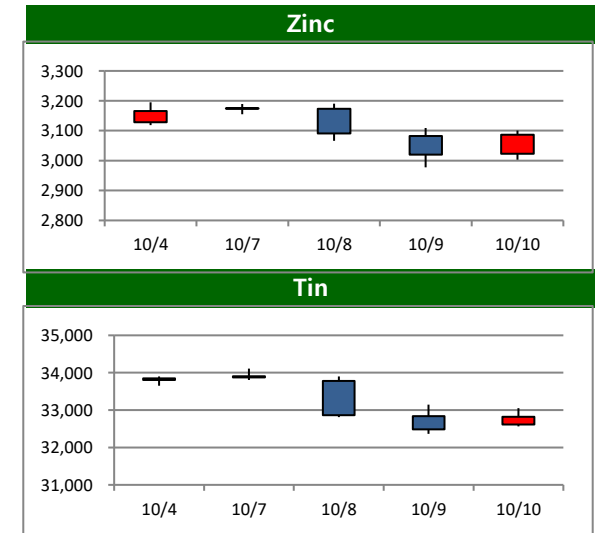
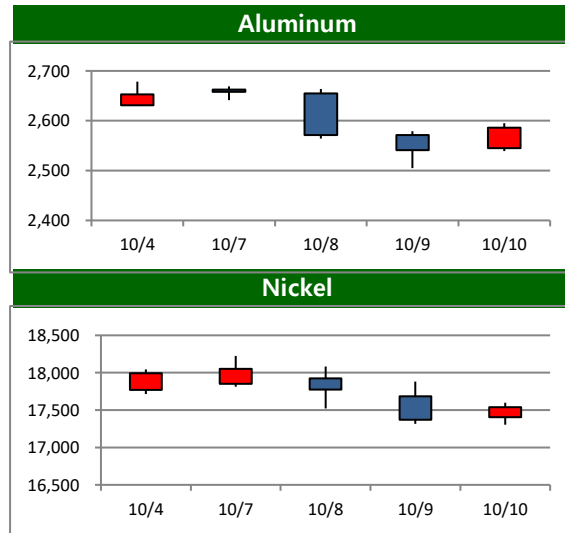
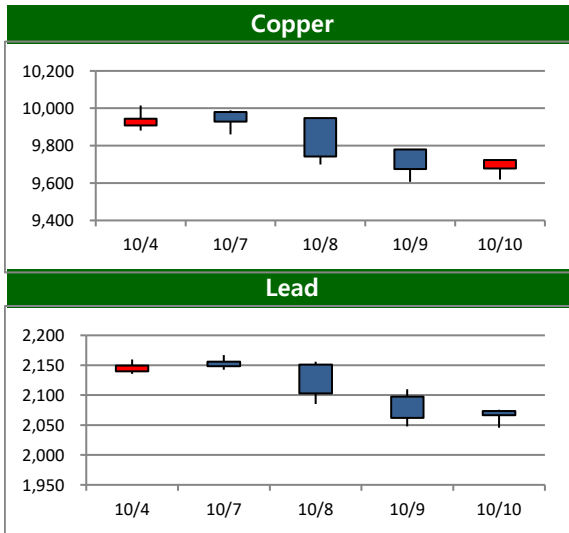
	전주		금 주			변동폭
	증가	시가	고가(B)	저가(A)	종가(A)	
Copper	9,943.50	9,980.00	10,015.00	9,606.50	9,791.50	-152.00
Aluminum	2,653.00	2,662.50	2,669.00	2,505.00	2,632.50	-20.50
Zinc	3,166.00	3,175.00	3,190.50	2,977.50	3,154.00	-12.00
Lead	2,149.50	2,156.00	2,167.00	2,045.50	2,097.00	-52.50
Nickel	17,992.00	17,850.00	18,225.00	17,305.00	17,864.00	-128.00
Tin	33,805.00	33,875.00	34,110.00	32,365.00	33,212.00	-593.00

### Weekly Performance



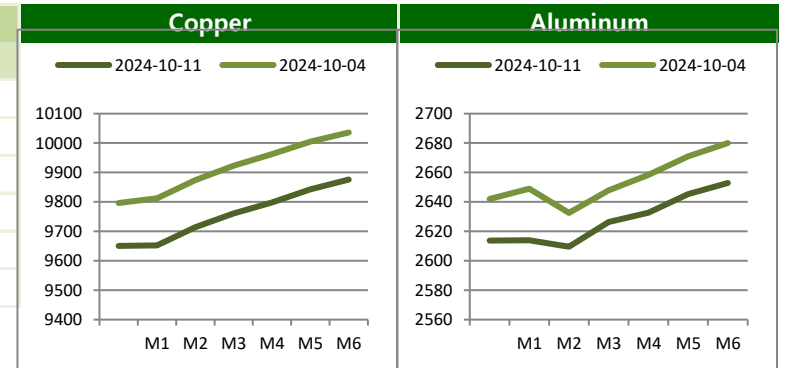
\* Base Metal 증가는 LME 전산장 종료시점 기준 (LONDON 19시00분)

### Movement of This Week (USD/톤)

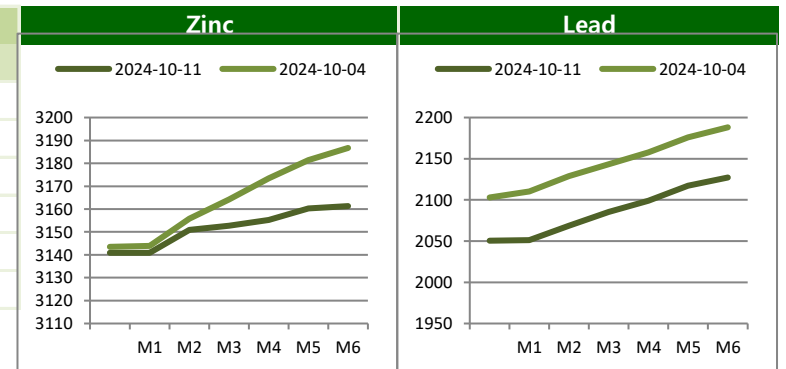


**BASE Metals**
**Cash to 3M Spread**

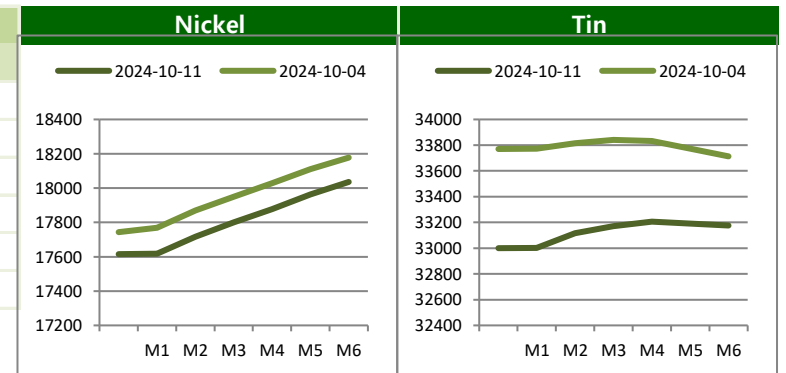
	금 주		전 주		변 동	
	Bid	Ask	Bid	Ask	Bid	Ask
<b>Copper</b>	c142.51	c139.51	c148.59	c145.59	-6.08	-6.08
<b>Aluminum</b>	c19.87	c17.87	c11.94	c9.94	7.93	7.93
<b>Zinc</b>	c14.61	c11.61	c24.00	c21.00	-9.39	-9.39
<b>Lead</b>	c48.47	c44.47	c48.53	c44.53	-0.06	-0.06
<b>Nickel</b>	c251.86	c245.86	c251.67	c245.67	0.19	0.19
<b>Tin</b>	c217.00	c207.00	c40.00	c30.00	177.00	177.00

**Forward Curve**

**LME Official Settlement Prices (AM 2nd Ring)**

	금 주		전 주		변 동	
	Cash	3M	Cash	3M	Cash	3M
<b>Copper</b>	<b>9596.50</b>	<b>9735.00</b>	9784.00	9936.00	-187.50	-201.00
<b>Aluminum</b>	<b>2645.00</b>	<b>2653.50</b>	2654.00	2665.50	-9.00	-12.00
<b>Zinc</b>	<b>3108.00</b>	<b>3117.00</b>	3144.00	3168.50	-36.00	-51.50
<b>Lead</b>	<b>2047.00</b>	<b>2087.00</b>	2107.00	2154.00	-60.00	-67.00
<b>Nickel</b>	<b>17615.00</b>	<b>17900.00</b>	17600.00	17830.00	15.00	70.00
<b>Tin</b>	<b>33150.00</b>	<b>33300.00</b>	33805.00	33775.00	-655.00	-475.00


**LME Evening Evaluation**

	금 주		전 주		변 동	
	Cash	3M	Cash	3M	Cash	3M
<b>Copper</b>	<b>9650.49</b>	<b>9791.50</b>	9796.41	9943.50	-145.92	-152.00
<b>Aluminum</b>	<b>2613.63</b>	<b>2632.50</b>	2642.06	2653.00	-28.43	-20.50
<b>Zinc</b>	<b>3140.89</b>	<b>3154.00</b>	3143.50	3166.00	-2.61	-12.00
<b>Lead</b>	<b>2050.53</b>	<b>2097.00</b>	2102.97	2149.50	-52.44	-52.50
<b>Nickel</b>	<b>17615.14</b>	<b>17864.00</b>	17743.33	17992.00	-128.19	-128.00
<b>Tin</b>	<b>33000.00</b>	<b>33212.00</b>	33770.00	33805.00	-770.00	-593.00

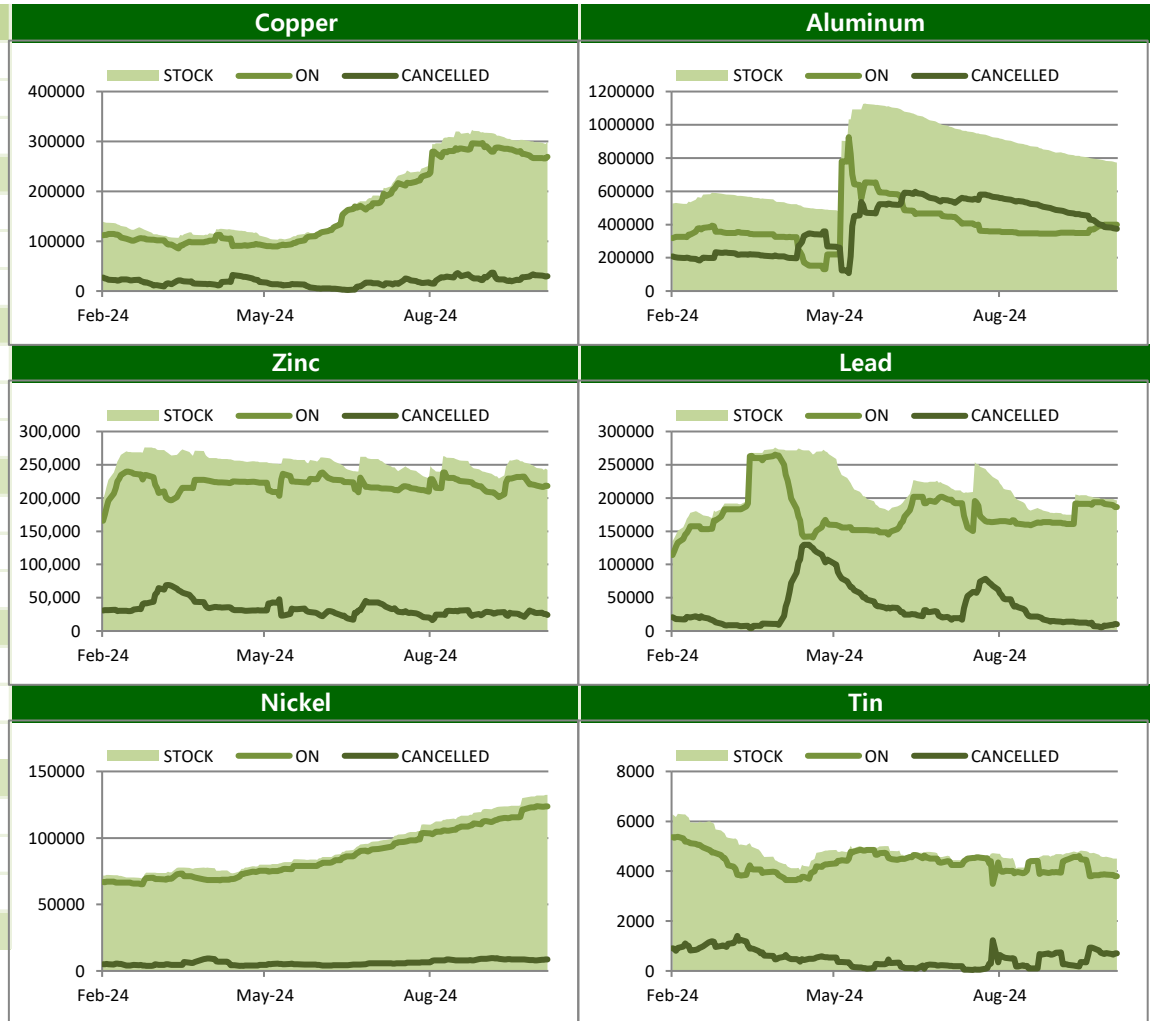


**BASE Metals**

LME Stocks (단위/톤)

	Location	금 주	전 주	변 동
Copper	Asia	245700	251450	-5750
	Europe	51325	46550	4775
	America	525	525	0
	<b>Total</b>	<b>297550</b>	<b>298525</b>	<b>-975</b>
Aluminum	Asia	764125	776625	-12500
	Europe	3775	3775	0
	America	2375	2375	0
	<b>Total</b>	<b>770275</b>	<b>782775</b>	<b>-12500</b>
Zinc	Asia	242000	245325	-3325
	Europe	0	0	0
	America	0	0	0
	<b>Total</b>	<b>242000</b>	<b>245325</b>	<b>-3325</b>
Lead	Asia	193425	196175	-2750
	Europe	2450	2450	0
	America	0	0	0
	<b>Total</b>	<b>195875</b>	<b>198625</b>	<b>-2750</b>
Nickel	Asia	101262	100596	666
	Europe	30906	30930	-24
	America	402	426	-24
	<b>Total</b>	<b>132570</b>	<b>131952</b>	<b>618</b>
Tin	Asia	4550	4545	5
	Europe	35	35	0
	America	0	0	0
	<b>Total</b>	<b>4585</b>	<b>4580</b>	<b>5</b>

Stock / On Warrant / Cancelled Warrant (단위/톤)

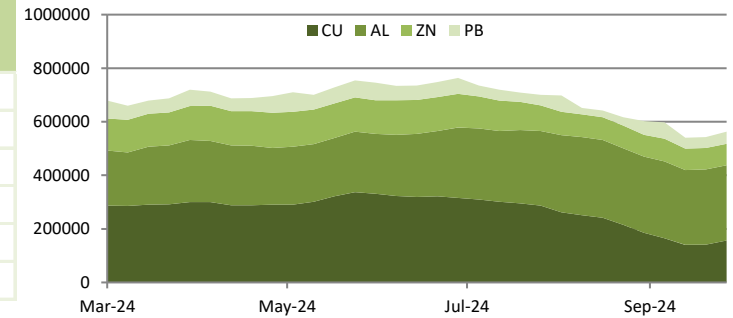


**BASE Metals**

**SHFE-LME SPREAD**

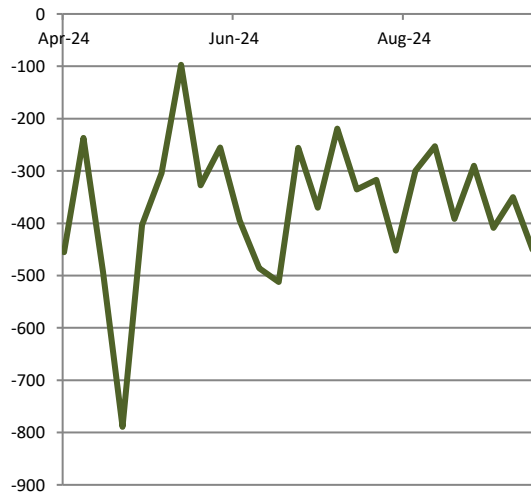
	CNY=	LME Cash (CNY)	증치세	LME Cash with 증치세	SHFE 최근월물	SHFE-LME 최근월물 (USD)
<b>Copper</b>	7.0753	67721	13%	79,234	77,260	<b>-278.96</b>
<b>Aluminum</b>	7.0753	18372	13%	21,495	20,800	<b>-98.25</b>
<b>Zinc</b>	7.0753	21802	13%	25,508	25,395	<b>-15.98</b>
<b>Lead</b>	7.0753	21566	13%	25,232	18,890	<b>-896.34</b>
<b>Nickel</b>	7.0753	33485	13%	39,177	92,080	<b>7,477.08</b>
<b>Tin</b>	7.0753	151977	13%	177,814	141,000	<b>-5,203.12</b>

**Weekly SHFE Inventory (단위/톤)**

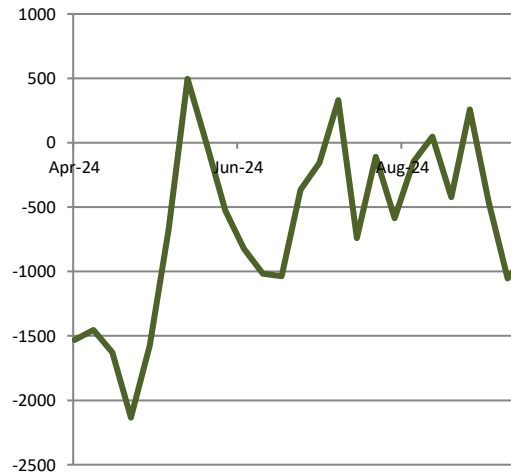


**SHFE-LME SPREAD (단위/USD)**

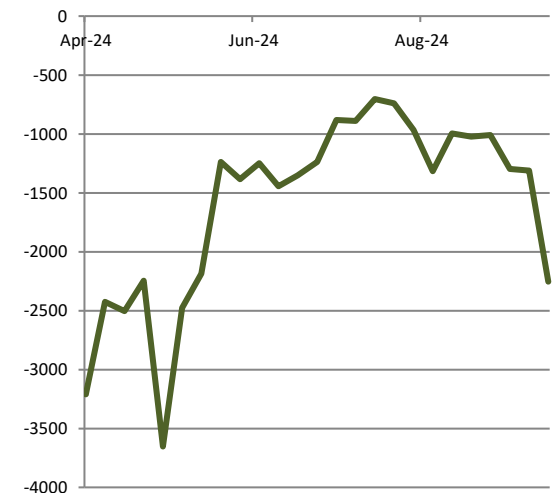
**Copper(USD)**



**Zinc(CNY)**



**Nickel(CNY)**

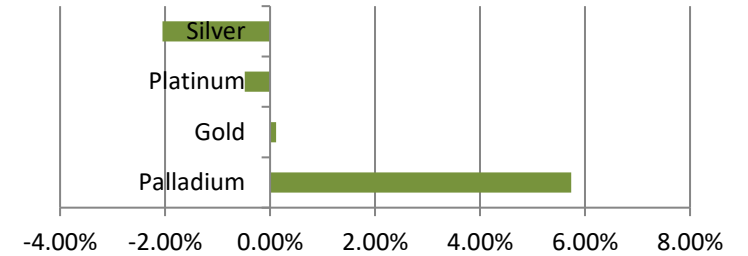


PRECIOUS Metals

Weekly Price Movement

	전주		금 주			변동폭
	종가	시가	고가(B)	저가(A)	종가(A)	
Gold	2,653.60	2,650.23	2,661.46	2,604.88	2,656.59	2.99
Silver	32.20	32.21	32.35	30.12	31.54	-0.66
Platinum	992.55	994.36	998.10	945.72	987.76	-4.79
Palladium	1,013.11	1,018.79	1,089.93	994.73	1,071.21	58.10

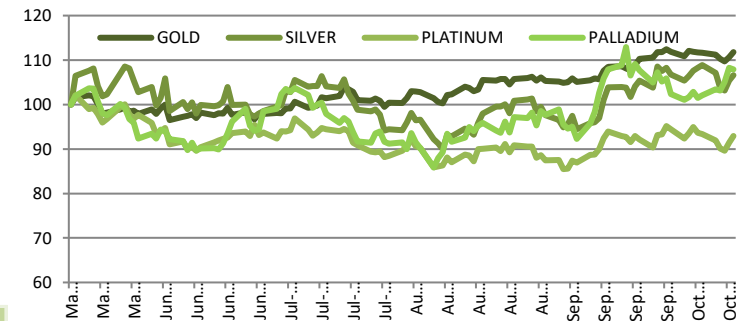
Weekly Performance



Forward Rate

	1M	2M	3M	6M	12M
Gold	4.91	5.56	4.90	4.68	4.28
Silver	5.04	5.00	4.99	4.73	4.31
Platinum	4.38	3.88	3.48	3.38	2.85
Palladium	4.43	4.20	3.87	3.42	2.89

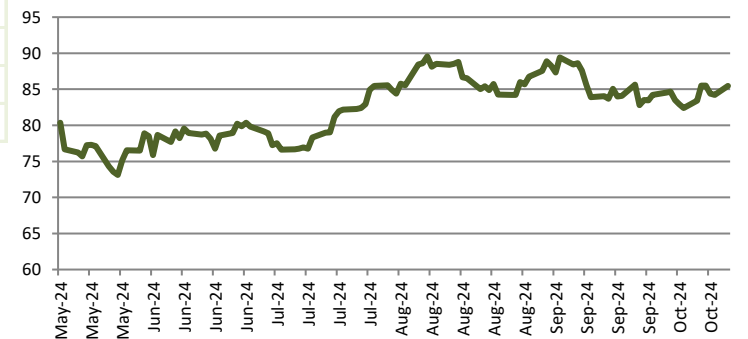
Relative Price Performance (단위/%)



LBMA FIXING

	금 주		전 주		변 동	
	AM	PM	AM	PM	AM	PM
Gold	2637.05	2648.80	2657.50	2650.05	20.45	1.25
Silver	31.20		32.06		0.87	
Platinum	975.00	977.00	1004.00	992.00	29.00	15.00
Palladium	1073.00	1073.00	1007.00	1008.00	-66.00	-65.00

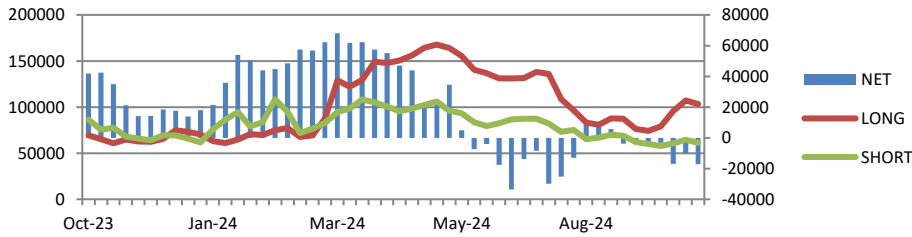
Gold/Silver Ratio (단위/배)



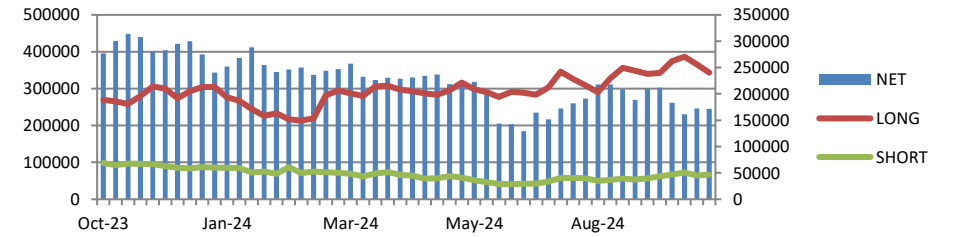
CFTC & Forecast

CFTC Non-Commercial Open Interest (단위/계약)

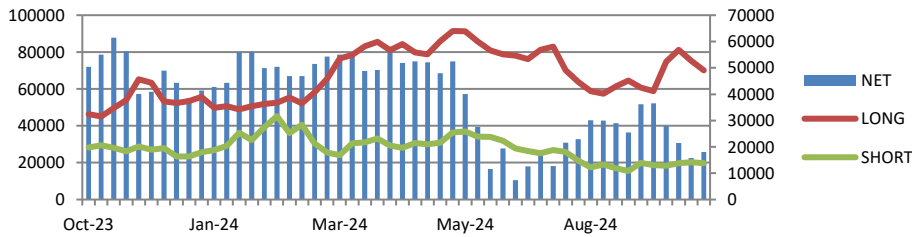
Copper



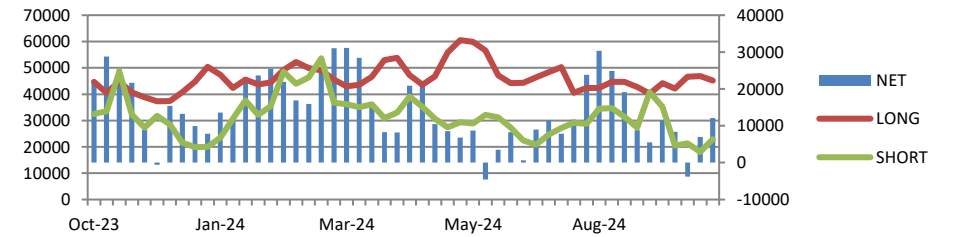
GOLD



SILVER



PLATINUM



Price Forecast

출처 Bloomberg 2024-10-14

	Current	Q3 24	Q4 24	Q1 25	Q2 25	2024	2025	2026	2027
Copper	9791.50	9422.50	9530.00	9800.00	9828.31	9307.50	9860.00	9989.00	9960.50
Aluminum	2632.50	2450.00	2500.00	2550.00	2575.00	2417.00	2593.75	2600.00	2600.00
Zinc	3154.00	2797.00	2827.53	2797.48	2796.51	2731.00	2700.00	2702.89	2700.00
Lead	2097.00	2100.00	2100.00	2100.00	2160.00	2136.00	2161.06	2146.50	2205.00
Nickel	17864.00	17000.00	17000.00	17350.00	17400.00	17300.00	17450.00	17568.48	17665.00
Tin	33212.00	31000.00	32000.00	32250.00	31875.00	30306.00	32000.00	33250.00	34000.00
Gold	2656.59	2400.00	2550.00	2525.00	2550.00	2355.00	2563.00	2290.00	2200.00
Silver	31.54	29.10	30.30	31.00	30.85	27.85	30.85	28.00	28.00
Platinum	987.76	990.00	1010.95	1095.00	1062.96	970.70	1130.00	1200.00	1215.00
Palladium	1071.21	960.00	985.00	1010.00	1002.50	990.00	1060.00	1000.00	1125.00