

# Weekly Metal Data

1st Week of Oct ( 24-09-30 ~ 24-10-04 )

Consulting/ Dealing Room: (02) 3774-0311 ~ 0321 FAX: (02) 761-2264 / 2265

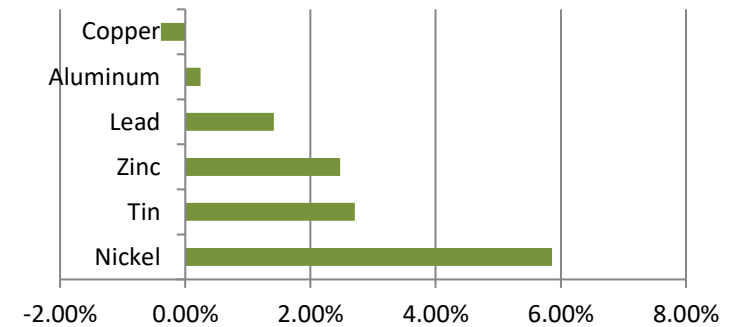
NH선물 글로벌상품영업팀

## BASE Metals

### Weekly Price Movement

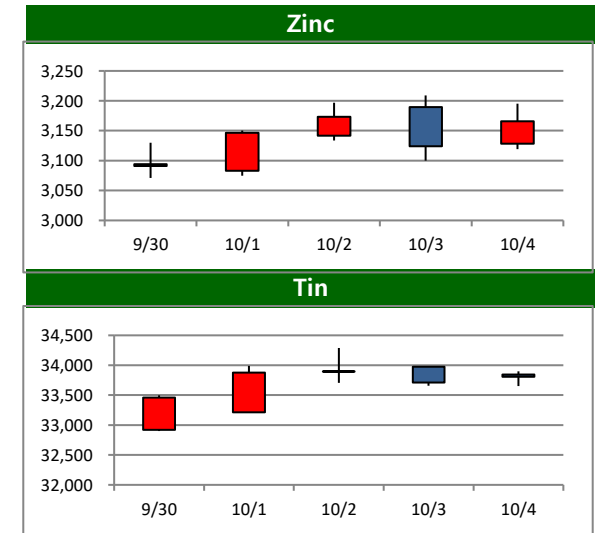
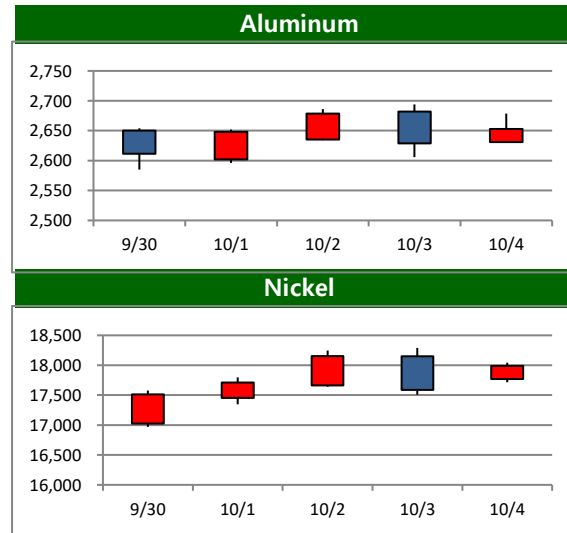
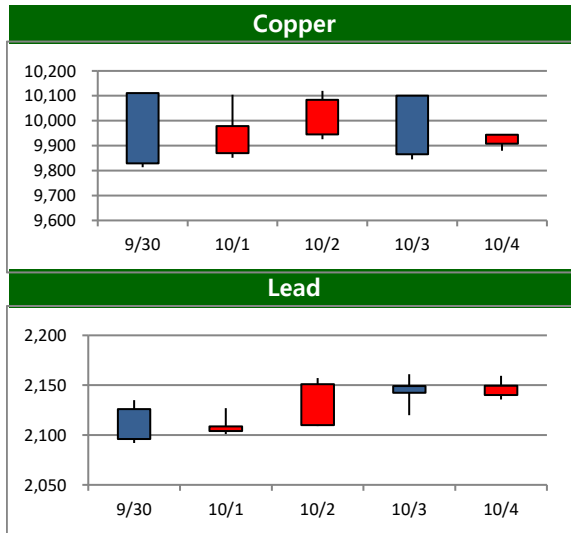
	전주		금		주		변동폭
	증가	시가	고가(B)	저가(A)	종가(A)		
Copper	9,982.50	10,111.00	10,158.00	9,813.50	9,943.50	-39.00	
Aluminum	2,646.50	2,650.00	2,694.00	2,585.00	2,653.00	6.50	
Zinc	3,089.50	3,094.00	3,209.00	3,071.00	3,166.00	76.50	
Lead	2,119.50	2,126.00	2,161.00	2,092.00	2,149.50	30.00	
Nickel	16,996.00	17,025.00	18,290.00	16,970.00	17,992.00	996.00	
Tin	32,913.00	32,920.00	34,288.50	32,900.00	33,805.00	892.00	

### Weekly Performance



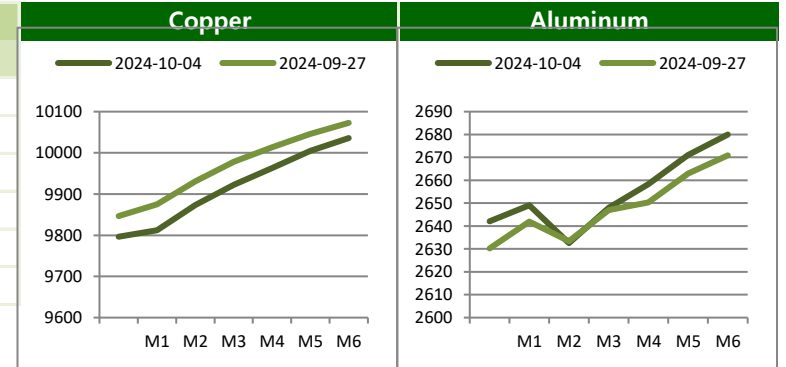
\* Base Metal 증가는 LME 전산장 종료시점 기준 (LONDON 19시00분)

### Movement of This Week (USD/톤)

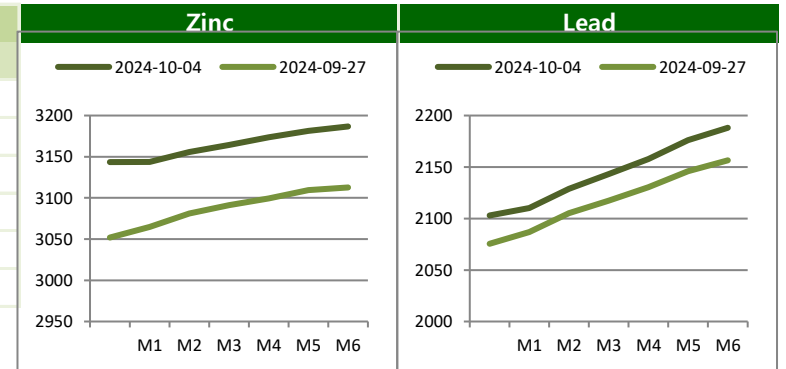


**BASE Metals**
**Cash to 3M Spread**

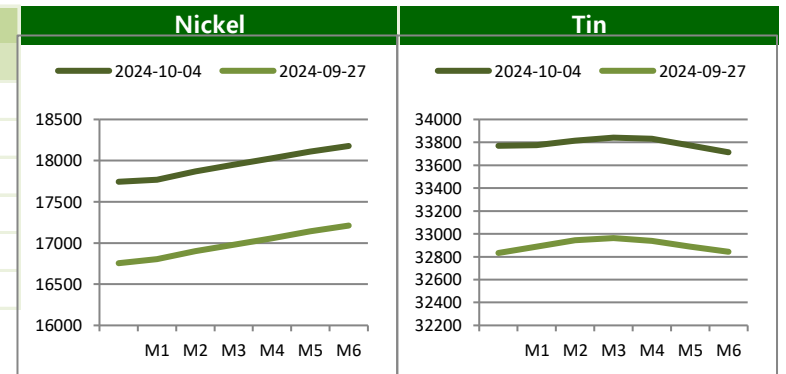
	금 주		전 주		변 동	
	Bid	Ask	Bid	Ask	Bid	Ask
<b>Copper</b>	c148.59	c145.59	c137.47	c134.47	11.12	11.12
<b>Aluminum</b>	c11.94	c9.94	c17.27	c15.27	-5.33	-5.33
<b>Zinc</b>	c24.00	c21.00	c39.09	c36.09	-15.09	-15.09
<b>Lead</b>	c48.53	c44.53	c46.00	c42.00	2.53	2.53
<b>Nickel</b>	c251.67	c245.67	c243.90	c237.90	7.77	7.77
<b>Tin</b>	c40.00	c30.00	c85.00	c75.00	-45.00	-45.00

**Forward Curve**

**LME Official Settlement Prices (AM 2nd Ring)**

	금 주		전 주		변 동	
	Cash	3M	Cash	3M	Cash	3M
<b>Copper</b>	<b>9784.00</b>	<b>9936.00</b>	9860.00	9995.00	-76.00	-59.00
<b>Aluminum</b>	<b>2654.00</b>	<b>2665.50</b>	2609.50	2624.00	44.50	41.50
<b>Zinc</b>	<b>3144.00</b>	<b>3168.50</b>	3045.50	3086.00	98.50	82.50
<b>Lead</b>	<b>2107.00</b>	<b>2154.00</b>	2078.00	2123.50	29.00	30.50
<b>Nickel</b>	<b>17600.00</b>	<b>17830.00</b>	16655.00	16900.00	945.00	930.00
<b>Tin</b>	<b>33805.00</b>	<b>33775.00</b>	32450.00	32375.00	1355.00	1400.00


**LME Evening Evaluation**

	금 주		전 주		변 동	
	Cash	3M	Cash	3M	Cash	3M
<b>Copper</b>	<b>9796.41</b>	<b>9943.50</b>	9846.53	9982.50	-50.12	-39.00
<b>Aluminum</b>	<b>2642.06</b>	<b>2653.00</b>	2630.23	2646.50	11.83	6.50
<b>Zinc</b>	<b>3143.50</b>	<b>3166.00</b>	3051.91	3089.50	91.59	76.50
<b>Lead</b>	<b>2102.97</b>	<b>2149.50</b>	2075.50	2119.50	27.47	30.00
<b>Nickel</b>	<b>17743.33</b>	<b>17992.00</b>	16755.10	16996.00	988.23	996.00
<b>Tin</b>	<b>33770.00</b>	<b>33805.00</b>	32833.00	32913.00	937.00	892.00

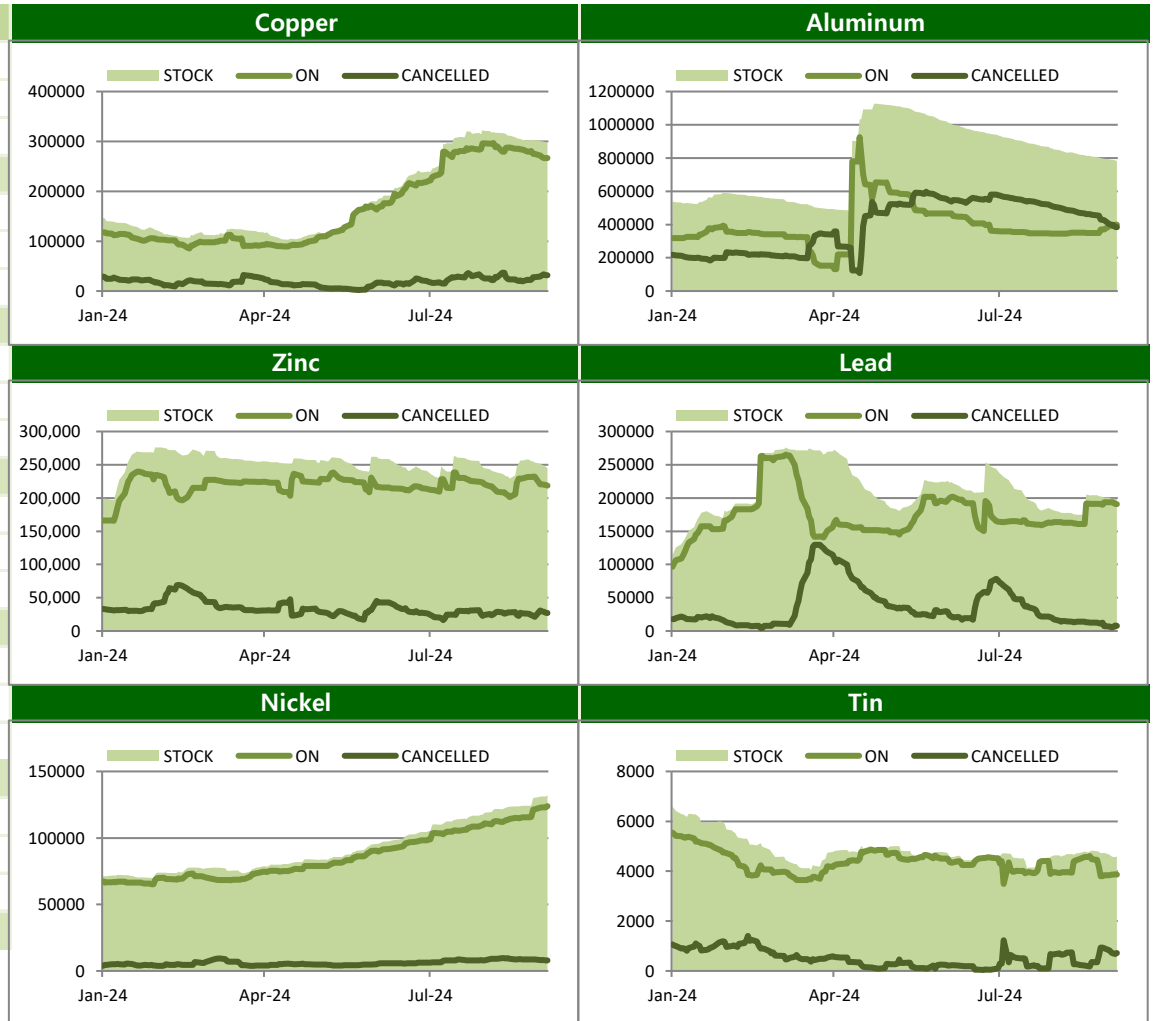


**BASE Metals**

LME Stocks (단위/톤)

	Location	금 주	전 주	변 동
Copper	Asia	251450	254775	-3325
	Europe	46550	47225	-675
	America	525	525	0
	<b>Total</b>	<b>298525</b>	<b>302525</b>	<b>-4000</b>
Aluminum	Asia	776625	789125	-12500
	Europe	3775	3950	-175
	America	2375	2375	0
	<b>Total</b>	<b>782775</b>	<b>795450</b>	<b>-12675</b>
Zinc	Asia	245325	253250	-7925
	Europe	0	0	0
	America	0	0	0
	<b>Total</b>	<b>245325</b>	<b>253250</b>	<b>-7925</b>
Lead	Asia	196175	198525	-2350
	Europe	2450	2450	0
	America	0	0	0
	<b>Total</b>	<b>198625</b>	<b>200975</b>	<b>-2350</b>
Nickel	Asia	100596	98922	1674
	Europe	30930	30954	-24
	America	426	432	-6
	<b>Total</b>	<b>131952</b>	<b>130308</b>	<b>1644</b>
Tin	Asia	4545	4705	-160
	Europe	35	35	0
	America	0	0	0
	<b>Total</b>	<b>4580</b>	<b>4740</b>	<b>-160</b>

Stock / On Warrant / Cancelled Warrant (단위/톤)

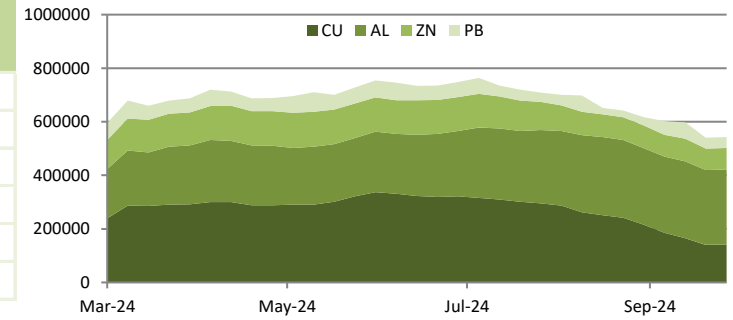


**BASE Metals**

**SHFE-LME SPREAD**

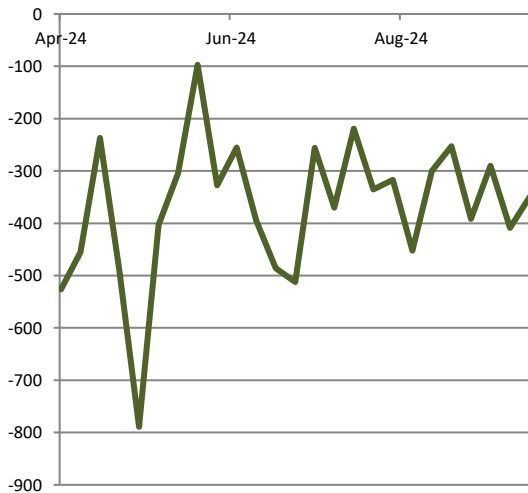
	CNY=	LME Cash (CNY)	증치세	LME Cash with 증치세	SHFE 최근월물	SHFE-LME 최근월물 (USD)
<b>Copper</b>	#N/A	#N/A	13%	#N/A	#N/A	#N/A
<b>Aluminum</b>	#N/A	#N/A	13%	#N/A	#N/A	#N/A
<b>Zinc</b>	#N/A	#N/A	13%	#N/A	25,395	#N/A
<b>Lead</b>	#N/A	#N/A	13%	#N/A	18,890	#N/A
<b>Nickel</b>	#N/A	33485	13%	39,177	92,080	#N/A
<b>Tin</b>	#N/A	#N/A	13%	#N/A	141,000	#N/A

**Weekly SHFE Inventory (단위/톤)**

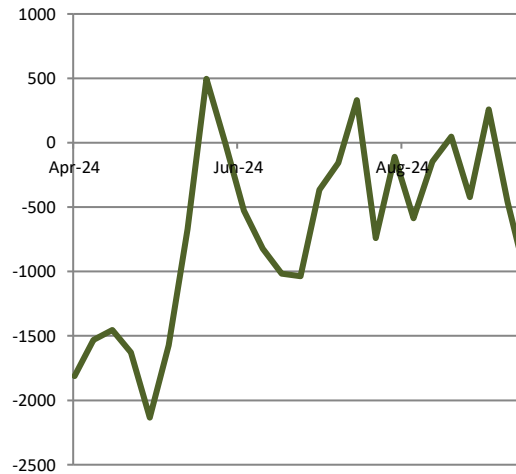


**SHFE-LME SPREAD (단위/USD)**

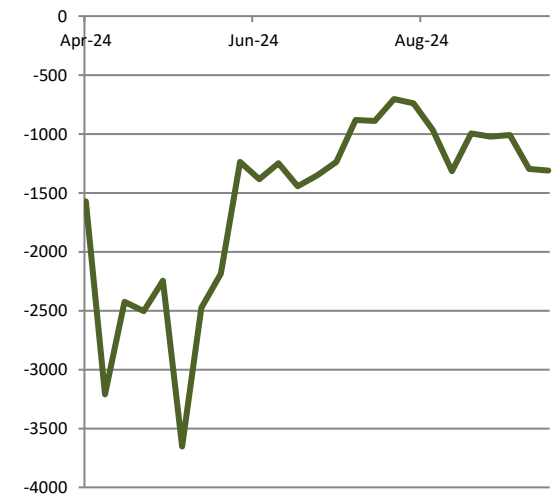
**Copper(USD)**



**Zinc(CNY)**



**Nickel(CNY)**

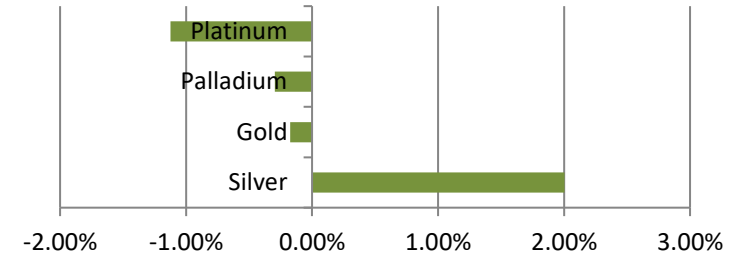


PRECIOUS Metals

Weekly Price Movement

	전주		금 주		변동폭	
	종가	시가	고가(B)	저가(A)		
Gold	2,658.24	2,658.67	2,673.18	2,624.81	2,653.60	-4.64
Silver	31.57	31.67	32.96	30.89	32.20	0.63
Platinum	1,003.82	1,008.15	1,014.18	973.03	992.55	-11.27
Palladium	1,016.12	1,020.92	1,027.17	983.46	1,013.11	-3.01

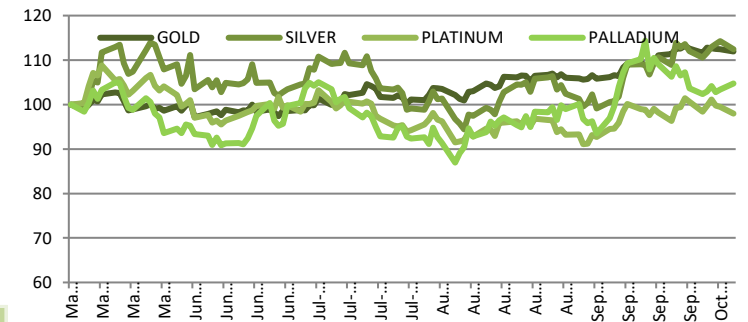
Weekly Performance



Forward Rate

	1M	2M	3M	6M	12M
Gold	4.95	5.56	4.94	4.67	4.31
Silver	5.10	5.07	5.02	4.73	4.35
Platinum	4.45	4.03	3.75	3.20	2.75
Palladium	4.53	4.23	4.00	3.35	2.89

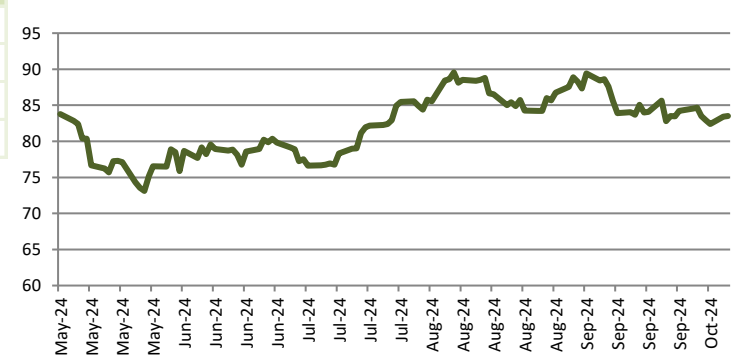
Relative Price Performance (단위/%)



LBMA FIXING

	금 주		전 주		변 동	
	AM	PM	AM	PM	AM	PM
Gold	2657.50	2650.05	2660.55	2661.85	3.05	11.80
Silver	32.06		31.92		-0.15	
Platinum	1004.00	992.00	1009.00	1013.00	5.00	21.00
Palladium	1007.00	1008.00	1038.00	1031.00	31.00	23.00

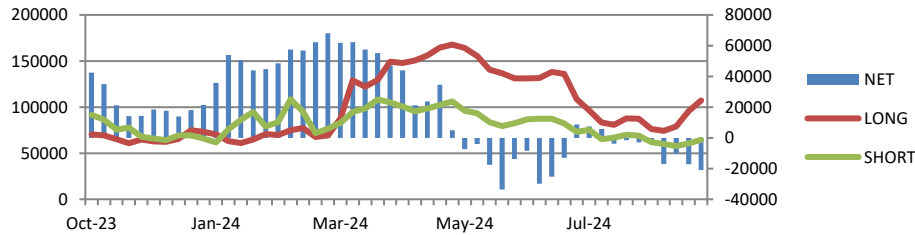
Gold/Silver Ratio (단위/배)



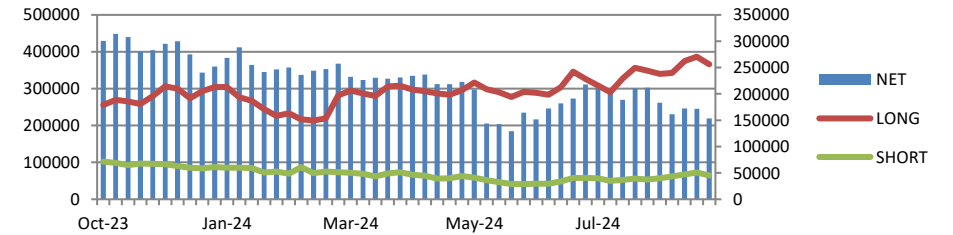
## CFTC & Forecast

### CFTC Non-Commercial Open Interest (단위/계약)

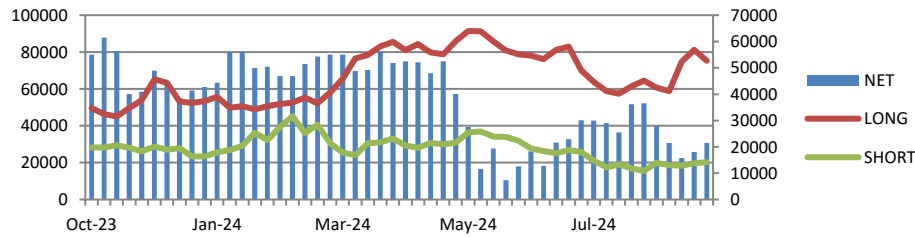
#### Copper



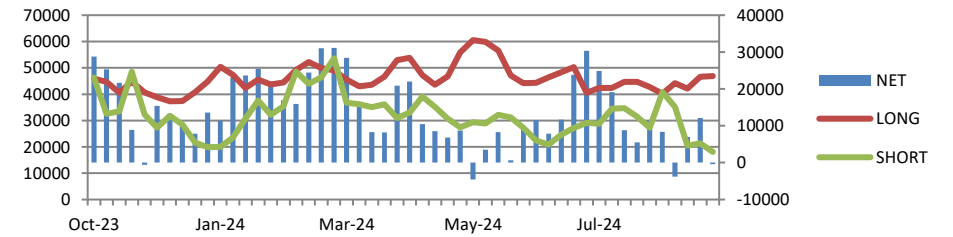
#### GOLD



#### SILVER



#### PLATINUM



### Price Forecast

출처 Bloomberg 2024-10-08

	Current	Q3 24	Q4 24	Q1 25	Q2 25	2024	2025	2026	2027
<b>Copper</b>	9943.50	9445.00	9530.00	9800.00	9828.31	9307.50	9860.00	9989.00	9960.50
<b>Aluminum</b>	2653.00	2435.00	2500.00	2550.00	2575.00	2417.00	2586.00	2600.00	2600.00
<b>Zinc</b>	3166.00	2797.22	2802.53	2772.48	2780.84	2731.00	2700.00	2625.00	2700.00
<b>Lead</b>	2149.50	2100.00	2100.00	2100.00	2160.00	2136.00	2161.06	2146.50	2205.00
<b>Nickel</b>	17992.00	16971.50	17075.00	17500.00	17400.00	17300.00	17450.00	17568.48	17665.00
<b>Tin</b>	33805.00	31000.00	32000.00	32250.00	31875.00	30306.00	32000.00	33250.00	34000.00
<b>Gold</b>	2653.60	2376.55	2522.50	2527.50	2532.50	2350.00	2531.50	2300.00	2200.00
<b>Silver</b>	32.20	29.00	30.30	31.02	30.93	27.85	30.93	28.25	28.50
<b>Platinum</b>	992.55	990.00	1010.95	1095.00	1062.96	970.70	1130.00	1200.00	1215.00
<b>Palladium</b>	1013.11	960.00	985.00	1010.00	1002.50	990.00	1060.00	1000.00	1125.00

